

Supplementary Materials for
**Protein Kinase CK2 Triggers Cytosolic Zinc Signaling Pathways by
Phosphorylation of Zinc Channel ZIP7**

Kathryn M. Taylor,* Stephen Hiscox, Robert I. Nicholson, Christer Hogstrand,
Peter Kille

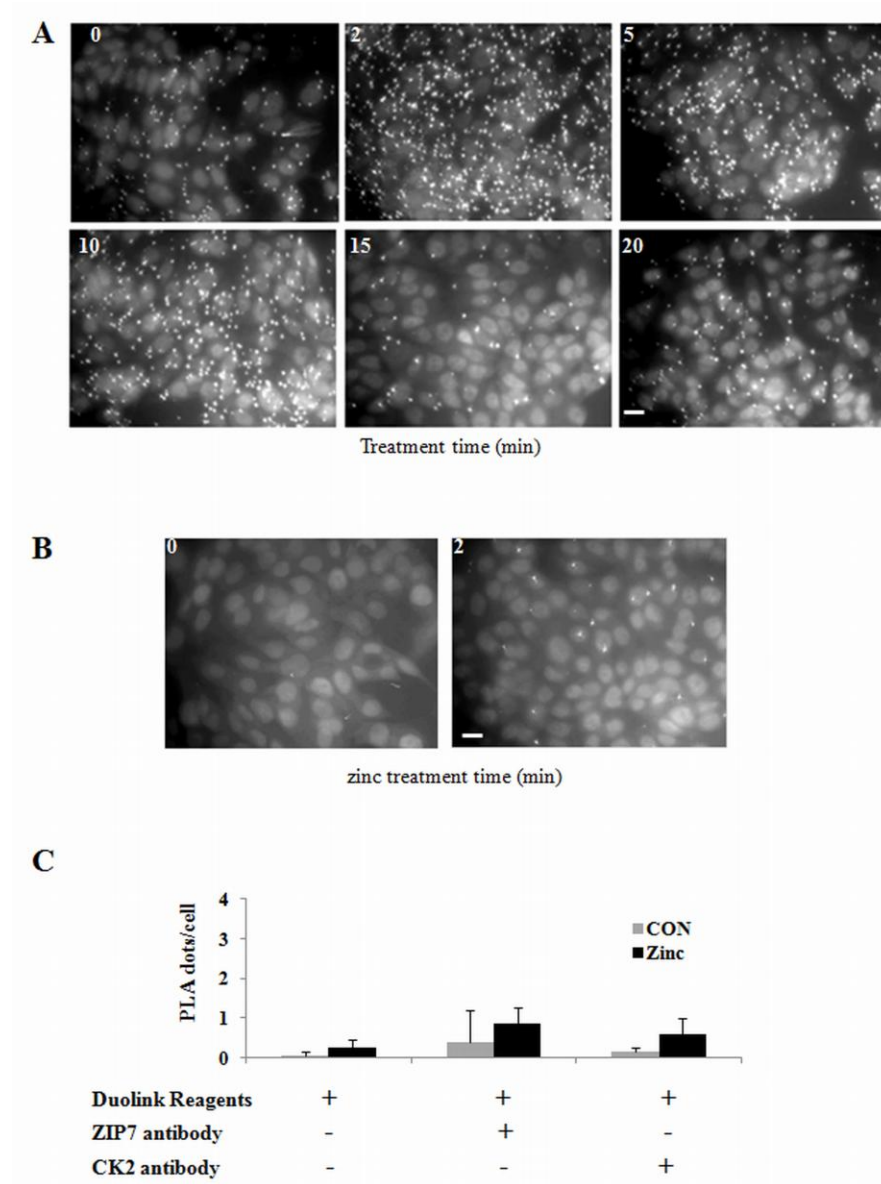
*To whom correspondence should be addressed. E-mail: taylorkm@cardiff.ac.uk

Published 7 February 2012, *Sci. Signal.* **5**, ra11 (2012)
DOI: 10.1126/scisignal.2002585

The PDF file includes:

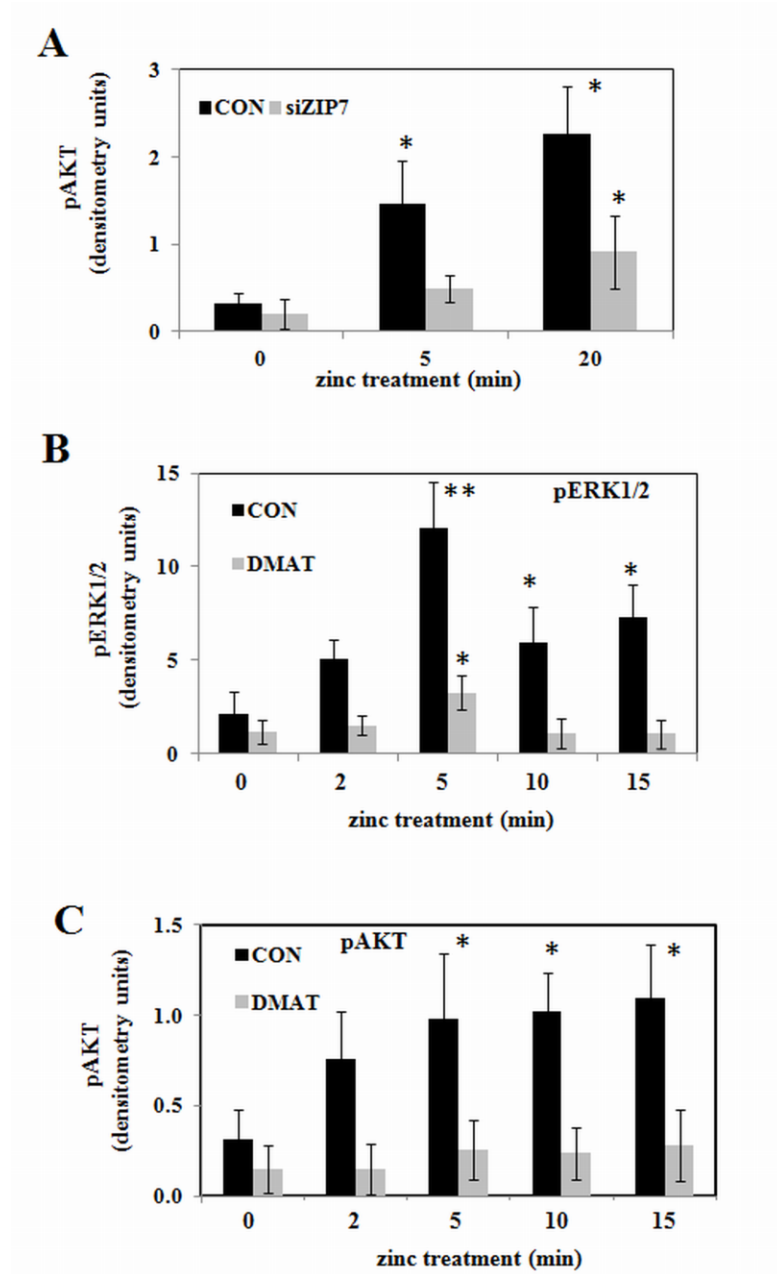
- Fig. S1. Proximity ligation assay images and control results.
- Fig. S2. Densitometry analysis of pooled Western blot results for Fig. 2.
- Fig. S3. Characterization of ZIP7 mutants and ZIP7 antibody.
- Fig. S4. Densitometry analysis of pooled Western blot results for Fig. 3.
- Fig. S5. Proximity ligation assay images and CK2 α antibody control.

Figure S1



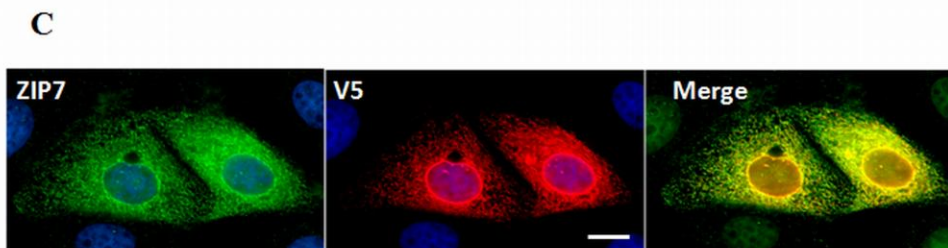
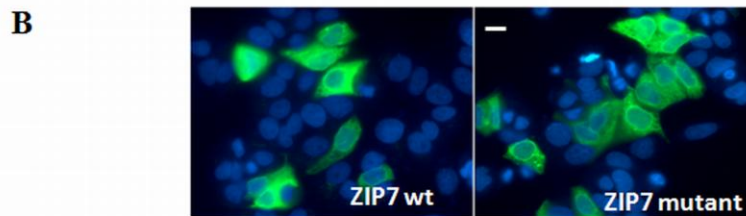
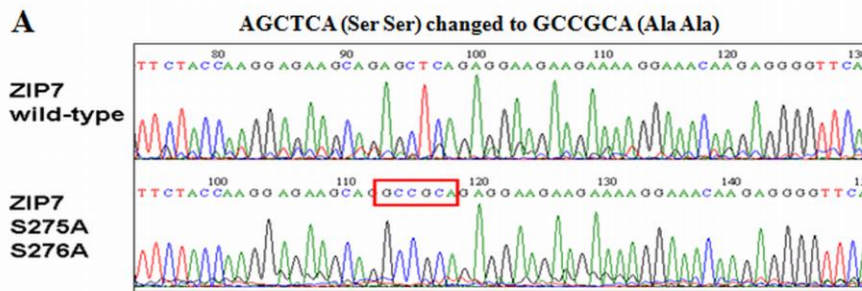
Proximity ligation assay images and control results. (A) Representative figures of proximity ligation assay of ZIP7 and CK2 α stimulated with zinc in Fig 1E Scale bar = 10 μ m. (B) Representative figures of no antibody controls for proximity ligation assay in Figs 1E and 4B. Scale bar = 10 μ m. (C) Control results for proximity ligation assay lacking single and both antibodies and representative of n=3 experiments and expressed as mean \pm SD

Figure S2



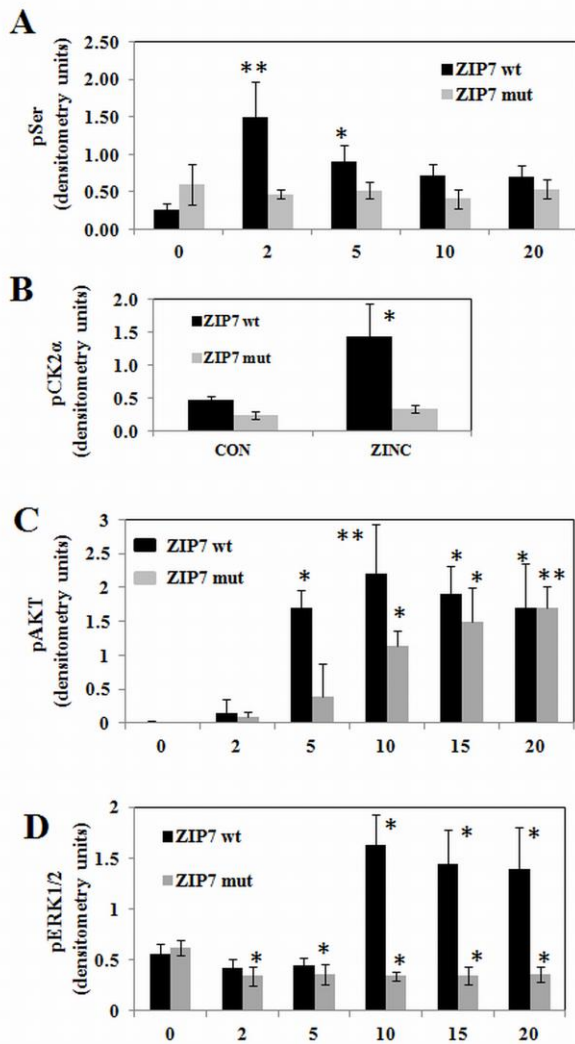
Densitometry analysis of pooled Western blot results for Fig. 2. (A) Densitometry analysis of pooled Western Blot results from Fig 2D from n=3 experiments and expressed as mean \pm SD. * denotes significance from time zero ($P \leq 0.05$). (B) Densitometry analysis of pooled Western Blot results from Fig 2E from n=3 experiments and expressed as mean \pm SD. * denotes significance from time zero ($P \leq 0.05$) and ** denotes $P \leq 0.001$. (C) Densitometry analysis of pooled Western Blot results from Fig 2E from n=3 experiments and expressed as mean \pm SD. * denotes significance from time zero ($P \leq 0.05$).

Figure S3



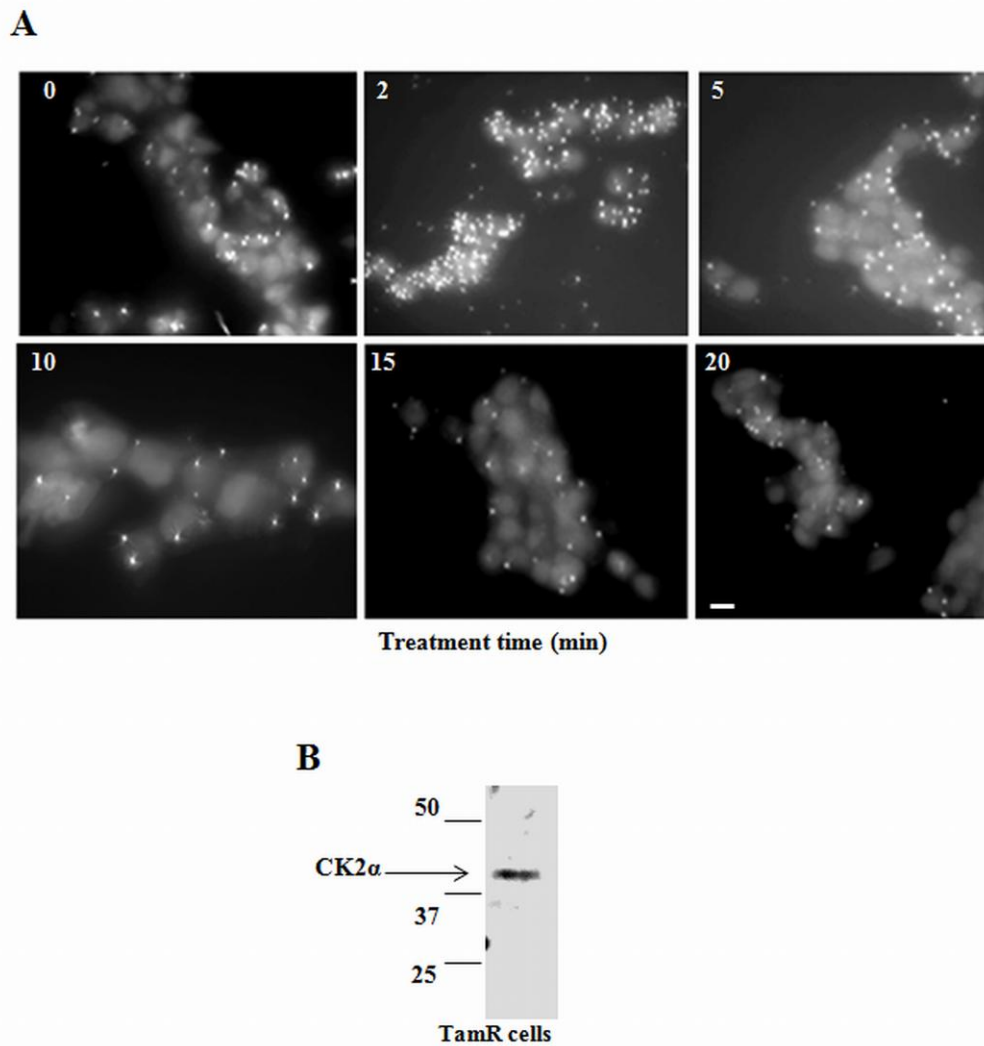
Characterization of ZIP7 mutants and ZIP7 antibody. (A) Sequencing demonstration of S275 and S276 mutated to A275 and A276 in ZIP7 sequence. (B) MCF-7 cells transfected with either wild-type or mutant ZIP7 and probed with V5 antibody conjugated to Alexa-Fluor 488 (green). Nuclei stained blue with DAPI. Scale bar = 10 μ m. (C) MCF-7 cells transfected with wild-type ZIP7 and probed with ZIP7 antibody conjugated to Alexa-Fluor 488 (green), V5 antibody conjugated to Alexa-Fluor 594 (red) and nuclei stained blue with DAPI. Scale bar = 10 μ m.

Figure S4



Densitometry analysis of pooled Western blot results for Fig. 3. (A) Densitometry analysis of pooled Western Blot results from Fig 3A from n=3 experiments and expressed as mean \pm SD. * denotes significance from time zero ($P \leq 0.05$) and ** denotes ($P \leq 0.001$). (B) Densitometry analysis of pooled Western Blot results from Fig 3C from n=3 experiments and expressed as mean \pm SD. * denotes significance from time zero ($P \leq 0.05$). (C) Densitometry analysis of pooled Western Blot results from Fig 3E from n=3 experiments and expressed as mean \pm SD. * denotes significance from time zero ($P \leq 0.05$) and ** denotes ($P \leq 0.001$). (D) Densitometry analysis of pooled Western Blot results from Fig 3E from n=3 experiments and expressed as mean \pm SD. * denotes significance from time zero ($P \leq 0.05$).

Figure S5



Proximity ligation assay images and CK2 α antibody control. (A) Representative figures of proximity ligation assay of ZIP7 and CK2 α stimulated with EGF and ionomycin in Fig 4B Scale bar = 10 μ m.

(B) CK2 α antibody recognizes a single band on Western Blot of appropriate size in TamR cells